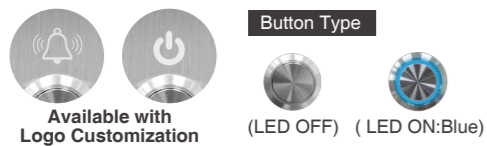


Push Button Series

AR-PB2

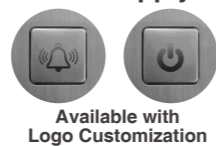
Full Stainless Steel Push Button



- Flush mounted design is thin and aesthetics, full stainless steel material make it durable.
- Three types for installation on various sites: Slim type, US type and EU type.
- 2 LED types for option: with LED, without LED.
- Weather resistance design for indoor and outdoor use.
- Welcome customized logo with laser engraving on the panel to enhance the overall image quality of the building or community.
- Conventional switch no power needed, easy installation and long life span.

AR-PB5

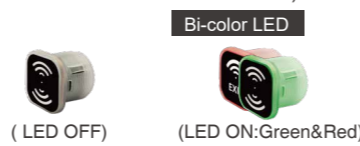
Stainless Steel Push Button
(No Power Supply Needed)



- Flush mounted design is thin and aesthetics, full stainless steel material make it durable.
- Three types for installation on various sites: Slim type, US type and EU type.
- Built-in multiple sets of membrane switches, can be triggered by pressing the button at any angle, with a life time of more than 500,000 times.
- Welcome customized logo with laser engraving on the panel to enhance the overall image quality of the building or community.
- No need external power supply, easy to use.

AR-101-PBI

Touch-less Infrared Sensor Push Button
(Active distance: -0.5cm or 5-20cm)



- Flush mounted design is thin and aesthetics, Bi-color LED ring shine and light your life.
- Infrared sensor design can trigger door lock without touching, suited in fields with high hygienic standards.
- Three types for installation on various sites: Slim type, US type and EU type.
- Modular design offer the flexibility to install it on the decoration surface on site rather than matching it with standard panels only.
- The infrared reading range 5-20cm is adjustable according to the needs.
- The micro switch design can trigger door open even if there is no power supply.

AR-888-PBI

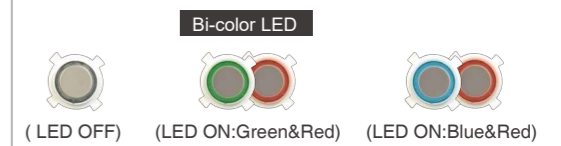
Flush Mounted IR Push Button
(Active distance: 3-5cm)



- Flush mounted design is thin and aesthetics, Bi-color LED ring shine and light your life.
- Infrared sensor design can trigger door lock without touching, suited in fields with high hygienic standards.
- US type and EU type for choice and installation on various sites.
- LED ring color is changeable according to user needs.
- Anti-sunlight and infrared interference design
- Waterproof rating IP65, suitable for indoor and outdoor installation.
- The infrared reading range is adjustable according to the needs.

AR-PB-6A/7A/8A

LED Piezo Push Button



- Flush mounted design is thin and aesthetics, Bi-color LED ring shine and light your life.
- Three types for installation on various sites: Slim type, US type and EU type.
- Ultra-thin design for direct installation & cutting hole.
- Waterproof rating IP65, suited to indoor and outdoor use; registered patent certification for waterproof LED Piezo push button and SGS waterproof certification.
- Power switch contact with current protection design.
- Bi-color LED design help you quickly find out push button in low lighting environment.

Features

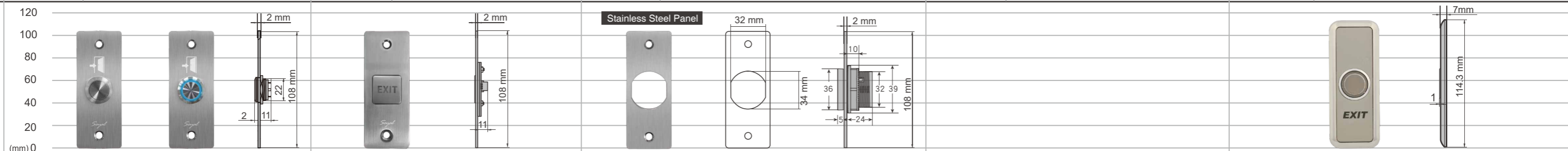
Specification

Slim US Type

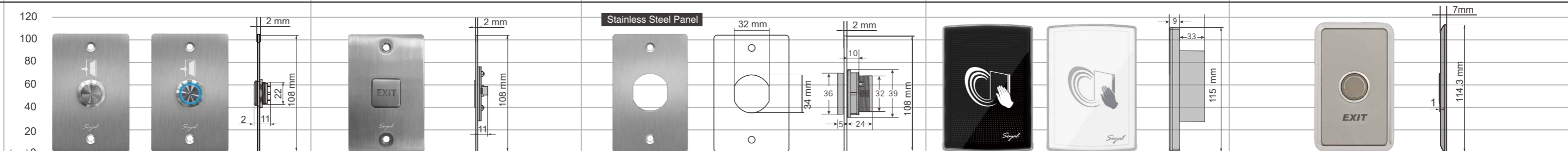
Rectangle US Type

Square EU Type

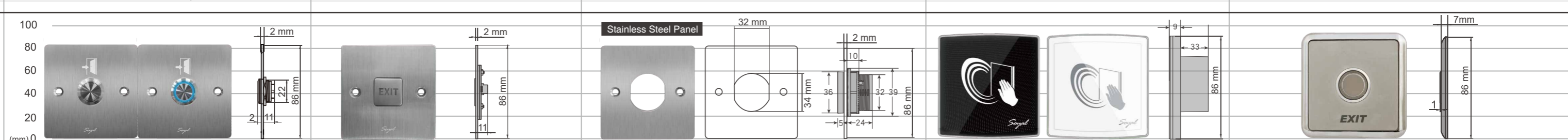
Voltage	None / DC 12V (LED)	Voltage	None	Voltage	DC 9-12V	Voltage	DC 9-24V	Voltage	None / DC 12V(LED)
Current	LED : 12VDC / 10mA	Current	-	Current	DC 12V Standby: 35mA / Max. during activation: 65mA	Current	DC 12V Standby: 35mA / Max. during activation: 65mA	Current	LED :12VDC / 10mA
Contact capacity	30VDC / 100mA	Contact capacity	30VDC / 100mA	Contact capacity	30VDC 1A / 125VAC 0.3A	Contact capacity	30VDC 1A / 125VAC 0.3A	Contact capacity	DC5-24V / 100mA
Output Contact	N.O.	Output Contact	N.O.	Output Contact	Relay(Form C)	Output Contact	Relay(Form C)	Output Contact	N.O.



Model No.	AR-PB2-041108 AR-PB2-041108-B	AR-PB5-041108	DMET-101PJ01	---	AR-PB-6A
Dimension	108(H)X41(W)X4/15(D)	108(H)X41(W)X2/13(D)	108(H)X41(W)X2/31(D)	---	114.3(H)X44.5(W)X7(D)
Print Text	SOYAL with Door Exit logo	SOYAL+EXIT	N/A	---	N/A / EXIT



Model No.	AR-PB2-068108 AR-PB2-068108-B	AR-PB5-068108	DMET-101PJ02	AR-PBI-888US	AR-PB-7A
Dimension	108(H)X68(W)X4/15(D)	108(H)X68(W)X2/13(D)	108(H)X68(W)X2/31(D)	118(H)X81(W)X9/42(D)	114.3(H)X70(W)X7(D)
Print Text	SOYAL with Door Exit logo	SOYAL+EXIT	N/A	N/A / SOYAL	N/A / EXIT



Model No.	AR-PB2-068108 AR-PB2-086086-B	AR-PB2-086086	DMET-101PJ03	AR-PBI-888EU	AR-PB-8A
Dimension	86(H)X86(W)X4/15(D)	86(H)X86(W)X2/13(D)	86(H)X86(W)X2/31(D)	86(H)X86(W)X9/42(D)	86(H)X86(W)X7(D)
Print Text	SOYAL with Door Exit logo	SOYAL+EXIT	N/A	N/A / SOYAL	N/A / EXIT